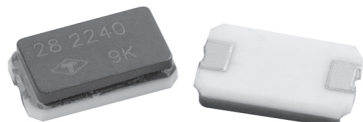


## Microprocessor Crystals Surface Mount 10.0MHz to 64.0MHz



### FEATURES

- Lead-less crystal for surface mounting.
- Withstand solder re-flow techniques.
- Slim-line profile.
- Standard 1000 pieces on tape and reel.

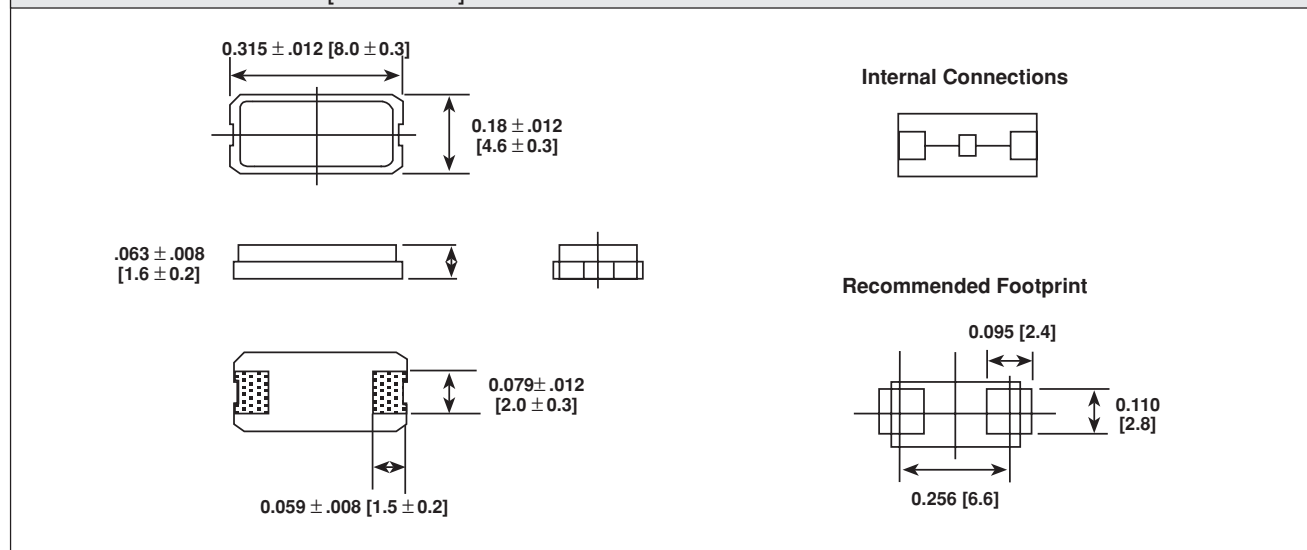
### EQUIVALENT SERIES RESISTANCE

FREQUENCY RANGE (MHz)	MODE OF VIBRATION	ESR MAX. (Ohms)
10.0 - 11.9	"AT" Fundamental	120
12.0 - 19.9	"AT" Fundamental	80
20.0 - 40.0	"AT" Fundamental	60
40.1 - 64.0	3rd Overtone	120

### STANDARD SPECIFICATIONS

**Operating Temperature Range:** - 10°C to + 60°C  
**Frequency Tolerance:** ± 50ppm  
**Frequency Stability:** ± 100ppm @ 25°C  
**Aging Characteristics:** ± 5ppm maximum @ 25°C per year  
**Load Capacitance:** 10 to 32pF or series resonant  
**Drive Level:** 0.1mW maximum  
**Shunt Capacitance:** 7pF maximum  
**Tape and Reel:** 1000 pieces

### DIMENSIONS in inches [millimeters]



### ORDERING INFORMATION

XT36C MODEL	LOAD	24M FREQUENCY
	Blank = Series	
	12 = 12pF	
	16 = 16pF	
	20 = 20pF	
	32 = 32pF	